

SPECIFICATIONS

Range	-58 to 572°F (-49.9 to 299.9°C)
Resolution	0.1
Accuracy	±0.5°F (±0.3°C) from -4 to 248°F otherwise ±1.8°F
Response Time	Full reading in 1 second* (0.2 seconds per time constant)
Battery	1 x AAA, approx. 500 hours without backlight
Auto-Off	After 10 min. to save battery life (Adjustable in app)
Probe	0.12 dia. x 4.3 L inches (reduces to 0.06 dia. inches) High performance type K thermocouple
Water Resistance	IP67
Display	1 H x 1.54 W inches (25 H x 39 W mm) rotates 180°, intelligent backlight
Dimensions	6.1 W x 1.7 H x 0.74 D inches (48.2 W x 156.2 H x 19.3 D mm)
Weight	4.05 oz. (115 g)
Calibration	NIST-Traceable Certificate included
Wireless Comm.	BLE 5.0
Approvals	US, Canada, EU, AU/NZ

*Response time defined as five time constants for 99.3% of actual temperature. Temperature readings displayed on a connected Bluetooth device may take longer than 1 second due to transmission rate and software processing.



ThermoWorks

Thermapen® ONE Blue



The **Bluetooth®** word mark and logos are registered trademarks owned by the Bluetooth SIG, Inc. and any use of such marks by ThermoWorks is under license.

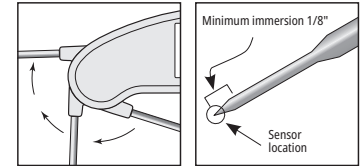
Google Play and the Google Play logo are trademarks of Google Inc. Android is a trademark of Google Inc.

Apple, the Apple logo, iPhone, and iPod touch are trademarks of Apple Inc., registered in the U.S. and other countries. App Store is a service mark of Apple Inc., registered in the U.S. and other countries.

iOS is a trademark or registered trademark of Cisco in the U.S. and other countries and is used under license.

INSTRUMENT OPERATION

The instrument is switched on by unfolding the probe and turned off by folding the probe away and lightly pressing the tip into the rubber probe retainer. The probe should not be rotated more than 180 degrees as damage will occur. It is recommended to store the probe in the closed position, when not in use.



Apply the tip of probe to the substance, medium or surface to be measured. The sensor is located at the tip of the probe, therefore the minimum depth insertion should be 1/8-inch (3 mm).



The probe tip is very sharp and therefore caution should be taken when using. Care should also be taken when closing the probe after taking hot temperatures as the probe may remain hot.

SETTINGS

Adjustable via the app and include: °C or °F, Measurement Interval, Display Sleep Interval, Connection Status Display, Display mode, Auto-off Interval, Sensor Name and High/ Low Alarm levels. All settings are stored in the instrument and are downloaded to the app on connection.



Made in the UK



ThermoWorks

741 E. Utah Valley Dr., American Fork, UT 84003
PH: 801-735-7700 Fax: 801-735-8948
thermoworks.com

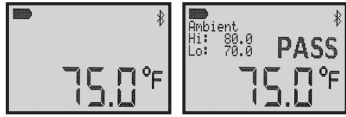
Ref: 547-607 15.12.23



Operating Instructions

DISPLAY

The display has two modes, basic mode and enhanced mode. Basic mode will be shown when not connected to Bluetooth. Enhanced mode will be shown when connected and enabled via settings.



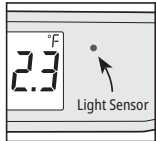
Please Note:

Enhanced display mode, Sleep Interval, and Connection Status Display Settings, are only available when using software compatible with the latest SDK/Protocol. When using the unit with older software, the display will remain in Basic mode at all times.

ROTATIONAL DISPLAY

The display will rotate 180° depending on the direction the instrument is pointing so that it can be used in either hand.

INTELLIGENT BACKLIGHT



Features a light sensor which will automatically turn the backlight on in low light conditions. The backlight will remain on for 10 seconds and automatically turn off if no movement is detected.

AUTO-OFF


If the instrument is not connected to Bluetooth within the set auto-off interval, it will shut down. The timer is reset with any movement or button press.

DISPLAY SLEEP INTERVAL

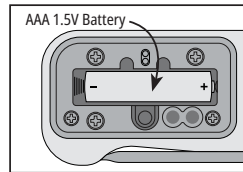
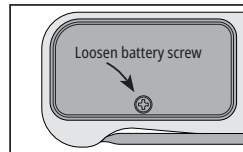
The display will 'SLEEP' after a settable time (default 30 seconds), when no movement has been detected. The instrument will remain connected whilst in display sleep and will wake up when movement is detected.

INSTRUMENT CLEANING - Clean the entire probe shaft with a probe wipe after each use to prevent bacteria growth. Clean instrument body with a damp, soapy cloth and dry thoroughly. **(NOTE: cleaning wipes and solvents containing Isopropyl Alcohol (IPA) may cause damage to the instrument enclosure and display screen, and will void the warranty)**

BATTERY REPLACEMENT

A battery symbol  indicates that the batteries will need replacing. The instrument continues to measure accurately but we recommend that the batteries be changed as soon as possible.

To replace the battery, loosen the battery cover screw using a phillips screwdriver to remove the battery cover. Replace with a single AAA battery noting the polarity. Tighten the battery cover screw until the battery cover is snug onto the seal. Do not over-tighten.



AMBIENT

The ambient operating range is -4 to 122°F.

LCD ERROR MESSAGES

If the ambient temperature falls outside the operational range, then either 'Ambient Lo' or 'Ambient Hi' will be displayed. This will

continue until the ambient temperature has returned within the limits. The thermometer should be allowed plenty of time (minimum 30 minutes) to stabilize to the working/room temperature. 'Hi' or 'Lo' will be displayed when the temperature being measured is outside of the instrument's measurement range. 'Err' will be displayed if the instrument has developed a fault.

PRODUCT WARRANTY

This instrument carries a two-year guarantee against defects in either components or workmanship. During this period, products that prove to be defective will, at the discretion of ThermoWorks, be either repaired or replaced without charge. This guarantee does not apply to sensors/probes, where a six-month period is offered. Full details of liability are available within ThermoWorks Terms & Conditions of Sale at www.thermoworks.com/product-warranty.

For warranty, service, and technical assistance, please contact ThermoWorks' Technical Support at (385) 330-0591 or email at techsupport@thermoworks.com.

CONNECTION

Use a Bluetooth Low Energy iOS or Android™ host device with a compatible app installed to make connections to the instrument. When connected, the Bluetooth symbol will show in the display.

Please Note:

No readings are stored in the instrument. When not connected, the instrument can still be used. Readings are taken and displayed every 1 second.

TRANSFER BUTTON MEASURE/TRANSFER

When connected, press to measure and transfer result via Bluetooth.



RADIO CERTIFICATIONS

This equipment has been tested and found to comply with the limits for a Class B digital device, pursuant to part 15 of the FCC Rules. These limits are designed to provide reasonable protection against harmful interference in a residential installation. This equipment generates, uses and can radiate radio frequency energy, and if not installed and used in accordance with the instructions, may cause harmful interference to radio communications. However, there is no guarantee that interference will not occur in a particular installation. If this equipment does cause harmful interference to radio or television reception, which can be determined by turning the equipment off and on, the user is encouraged to try to correct the interference by one or more of the following measures:

- Reorient or relocate the receiving antenna.
- Increase the separation between the equipment and receiver.
- Connect the equipment into an outlet on a circuit different from that to which the receiver is connected.
- Consult the dealer or an experienced radio/TV technician for help.

This device complies with Industry Canada license-exempt RSS standard(s). Operation is subject to the following two conditions: (1) this device may not cause interference, and (2) this device must accept any interference, including interference that may cause undesired operation of the device.

Le présent appareil est conforme aux CNR d'Industrie Canada applicables aux appareils radio exempts de licence. L'exploitation est autorisée aux deux conditions suivantes: (1) l'appareil ne doit pas produire de brouillage, et (2) l'utilisateur de l'appareil doit accepter tout brouillage radioélectrique subi, même si le brouillage est susceptible d'en compromettre le fonctionnement.

Under Industry Canada regulations, this radio transmitter may only operate using an antenna of a type and maximum (or lesser) gain approved for the transmitter by Industry Canada. To reduce potential radio interference to other users, the antenna type and its gain should be so chosen that the equivalent isotropically radiated power (e.i.r.p.) is not more than that necessary for successful communication.

Conformément à la réglementation d'Industrie Canada, le présent émetteur radio peut fonctionner avec une antenne d'un type et d'un gain maximal (ou inférieur) approuvé pour l'émetteur par Industrie Canada. Dans le but de réduire les risques de brouillage radioélectrique à l'intention des autres utilisateurs, il faut choisir le type d'antenne et son gain de sorte que la puissance isotrope rayonnée équivalente (p.i.r.e.) ne dépasse pas l'intensité nécessaire à l'établissement d'une communication satisfaisante.